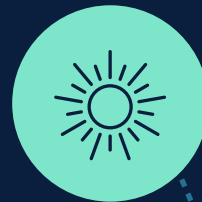


Safe Electromagnetic Energy (EME)
is all around us, and always has been.
Just look at what emits it.



Computers,
for work
or play.

The Sun, it's
been shining
forever.



TVs, we
use them
every day.

Mother
Earth
does too.



Even humans emit EME.



Toasters,
make
breakfast
possible.

Radios, we've
been using
them for
years.



All these things have been around us a long time, and the scientific evidence shows that the radio frequency EME emitted by them, poses no danger to human health. It's the same safe EME that's emitted by our mobile and wireless devices. That's why you can use your mobile phone and be confident in the science of safe connection.